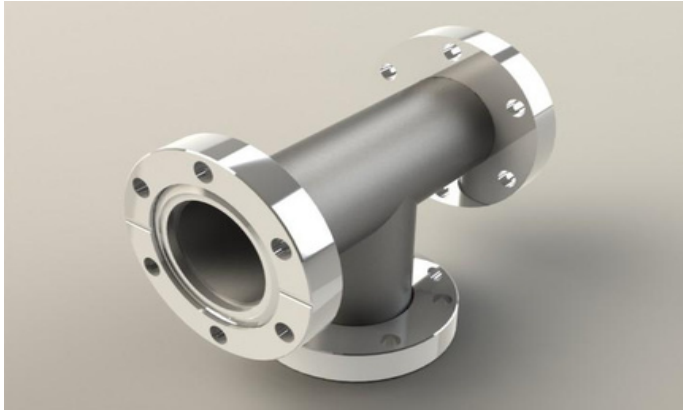


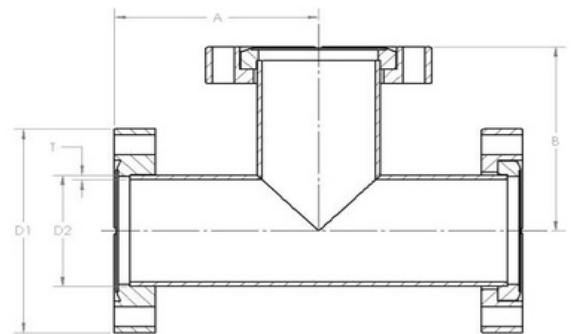
Tee 2 Flanges Rotatable TE16R



Specification

Material: 304L Stainless Steel

| A | B | D1 | D2 | T |
|-----------|-----------|-----------|-----------|------------|
| 38 (1.50) | 38 (1.50) | 34 (1.33) | 19 (0.75) | 1.6 (0.06) |



For all enquiries please contact us on:

