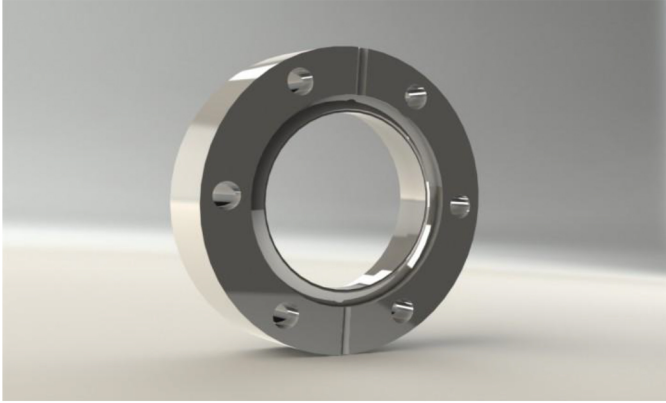


ITL Part Code - F35B38



Specification

Material: 304L Stainless Steel

Other bore sizes, 316L and 316LN available on request.

Clear bolt holes:

A	B	D1	D2	Bolt holes
12.7 (0.5)	4.8 (0.19)	70 (2.75)	38.2 (1.5)	6

Tapped bolt holes:

Part No	Thread dia
F35B38T	M6

