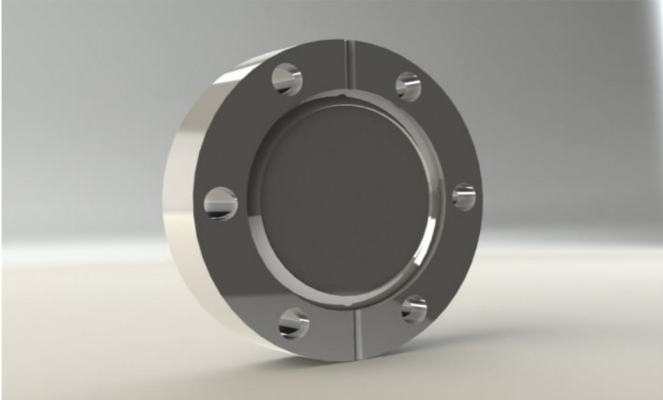


ITL Part Code - F35



Specification

Material: 304L Stainless Steel

Available in 316L and 316LN on request.

Clear bolt holes:

A	D1	GR	PCD	BH	Bolt Holes
12.7 (0.50)	70 (2.75)	48 (1.89)	58 (2.28)	6.7 (0.26)	6

Tapped bolt holes:

Part No	Thread Dia
F35T	M6

